



**Power
Transmit**

Company Profile



We Deliver The Best
Electrical Services

Power Transmit



Alhamdulillah, we pride ourselves on the fact that from the time of the customer's inception of an idea and our evaluation of technology characteristics and information criteria, we can provide an efficient design and serve highest quality technological support services that are cost effective and designed for low maintenance cost.

Our Vision:

Our Vision is to be the leader in designing, supplying and providing technological products, services and solutions that expand the Fire Safety and Electrical Security.

We provide innovative, comprehensive and flexible solutions for the connected world by listening to our customers, partners, and employees, utilizing our design and technical excellence, and creating a culture where employees develop and grow.

Our Services At-a-Glance

- » Load Calculation
- » Electrical Design
- » Auto PFI Unit
- » Supply of CT/PT (11KV & 33 KV)
- » Supply and Installation of Generator (Gas & Diesel)
- » Supply and Installation of Solar System
- » Supply of Metering Unit & U/G Cable Installation
- » Supply of VCB, ACB, LBS, ACR, ABS, DS, LT Switchgear
- » Supply, Installation and Commissioning of CCTV
- » Sub-Station (100-10000 KVA, 11 KV, 33 KV)
- » Supply, Testing and Commissioning of Fire Protection
- » Preparation of Environment Profile



Distribution Transformers



Gas/Diesel Generator



Solar Power System



PFI Plant



HT & LT Switchgear



CT / PT



**Power
Transmit**

HV/LV Distribution Transformers

50KVA-10MVA



Distribution Transformers



Gas/Diesel Generator



Solar



PFI Plant



HT & LT Switchgear



Automatic Circuit Recloser



Brands We Work With

ABB	LS	T-gami	AEER ENERGIA	C.a.p.t.	SAVITA	posco	AM SGB	Forest City
SIEMENS	HYUNDAI	Mikro	FRAKO	CTR	gandhar	JFE	NAXSO	Tempest
Schneider Electric	Linde	BELUK	EPCOS	EASTERN COPPER	BERGER	NIPPON STEEL	ThyssenKrupp	KELANI CABLES

Oil-Immersed Transformers

Frequency 50Hz-IEC Standards



Routine Tests

Routine tests carried out on all transformers during manufacture. Each transformer is issued with an official Test Certificate and an Oil Test Report.

- ☒ Insulation Resistance Test
- ☒ Power Frequency High Voltage Withstand Test
- ☒ Measurement of:
 - » No Load Loss and No Load Current
 - » Load Loss and Impedance Voltage
 - » MV & HV Winding Resistance
 - » Voltage Ratio and Polarity (Vector Group)
 - » Dielectric Strength of Oil

Standards

IEC 60076

Options

- ☒ On-load Tap Changer (OLTC)
- ☒ LV Cable Connection Box
- ☒ Control & Protection Devices
- ☒ Buchholz Relay or a Protection Relay System (for alarm and tripping):
 - » Gas Detector
 - » Low Oil Level Indicator
 - » Over Pressure Contact
 - » Thermostat and Thermometer

Description

Core: The transformer core is mitered cut from cold-rolled grain-oriented silicon steel (CRGO) of the highest quality, with stepped limb and yoke so as to obtain a maximum possible low loss magnetic circuit, clamped with heavy steel channels and tie rod.

Insulation: The dielectric circuit of transformers which isolates the magnetic and electric circuit and their parts maintaining high insulation level is formed by insulating paper, pressboards, bakelite and transformer oil of highest quality. Insulation is Class F according to IEC.

Winding: The HT and LT windings, designed with low current densities are constructed in multilayered cylindrical structures with off ducts ensuring sufficient mechanical and dielectric strength to survive under fault conditions.

Tank: The tank is designed and constructed with mild-steel along with radiators, forms a complete unit of sufficient mechanical strength and provides optimum support for heat dissipation under energized conditions.

Radiator: Radiators are built of cylindrical tubes made by bending mild-steel sheets. These tubes are joined by mig-welding to make the tubes leak proof. Number of tubes required are calculated to provide 65°C oil temperature rise above ambient.

Transformers comply with the following specifications:

- ☒ Three-Phase transformers, for indoor or outdoor use (installation to be specified)
- ☒ Step-Down type, Step-Up on request
- ☒ Rated frequency: 50Hz, 60Hz on request
- ☒ Maximum ambient temperature 40°C
- ☒ Mineral oil immersed (Other dielectric on request)
- ☒ Breathing-type transformers with integral filling
- ☒ Cover bolted on tank
- ☒ ONAN type natural cooling
- ☒ Standard anti-corrosion surface treatment and coating
- ☒ Final color Power Flow Engineering-Grey

Product Features

- » Quality Assured
- » Cost Competitive
- » Designed for Engineering Efficiency
- » After-sales service on call
- » Universal Mounting/ Moving Facility
- » Warranted

Specifications

Capacity (kVA)	Losses (watt)		% Imp.	% Regulation at Unity Power factor	% Efficiency at Unity Power factor	Outline Dimensions Approx. (cm)			Oil (Litre)	Total Weight (kg)
	No Load	Load at 75°C				H	L	W		
11000 / 415V, 3 - Phase Transformer										
50	150	925	4	1.68	97.85	118	94	58	140	580
100	245	1700	4	1.62	98.05	132	100	63	180	650
150	320	2412	4	1.40	98.17	145	105	88	220	900
200	435	2880	4	1.20	98.37	150	112	93	230	975
250	520	3265	4	1.22	98.48	158	113	95	270	1100
315	580	4500	4	1.15	98.38	157	120	97	350	1250
400	722	5420	4	1.10	98.44	162	123	98	390	1450
500	865	6275	5	1.05	98.57	165	124	102	425	1725
630	920	7740	5.5	0.98	98.62	170	136	103	500	1970
750	1150	8850	6.0	0.94	98.66	185	155	112	625	2250
800	1300	9800	6.0	0.96	98.61	225	170	113	650	2575
1000	1650	11600	6.0	0.99	98.67	215	185	115	800	2850
1250	1820	12300	6.5	0.95	98.87	225	190	116	1000	3725
1500	2100	13275	6.5	0.87	98.97	230	200	120	1200	4300
2000	2650	16470	6.5	0.83	99.04	250	210	135	1450	4750
2500	3140	19700	7	0.82	99.08	285	220	150	1800	5600
3000	3420	22860	7	0.77	99.12	300	230	170	2050	6350
33000 / 415V, 3 - Phase Transformer										
100	260	1700	4.5	1.60	98.05	133	102	63	198	790
150	340	2530	4.5	1.42	98.08	146	107	88	240	955
200	465	2950	4.5	1.63	98.29	151	114	93	285	1010
250	580	3340	4.5	1.20	98.43	155	116	95	360	1160
315	640	4725	4.5	1.18	98.29	158	122	97	450	1300
400	750	5760	4.5	1.13	98.37	163	125	98	495	1520
500	900	6500	4.5	1.10	98.52	167	127	102	560	1800
630	975	8125	4.5	0.95	98.55	172	138	103	700	2020
750	1240	9200	5.0	0.92	98.60	187	158	112	785	2340
800	1350	10000	5.5	0.90	98.58	202	173	113	820	2670
1000	1725	12100	5.5	0.97	98.61	220	188	115	870	2960
1250	1880	12950	5.5	0.93	98.81	287	193	116	1150	3850
1500	2200	13940	6.0	0.85	98.92	232	195	120	1260	4425
2000	2750	17300	5.5	0.86	98.99	253	197	135	1510	4870
2500	3400	20700	7.0	0.83	98.03	287	203	150	1865	5730
3000	3575	24000	7.0	0.79	99.08	303	233	170	2150	6475

Specifications are typical only and not guaranteed. In the interest of continuous technical development, the above specifications are subject to change without prior notice.

Warranty: We provide warranty against any materials and workmanship defect for a period of 18 months from date of delivery. We will repair/replace the defective parts within shortest possible time at our cost. After expiry of the warranty period, repair/maintenance of the equipment may be carried out for a nominal fee.

Gas/Diesel Generators

30kVA-3045kVA



Distribution Transformers



Gas/Diesel Generator



Solar



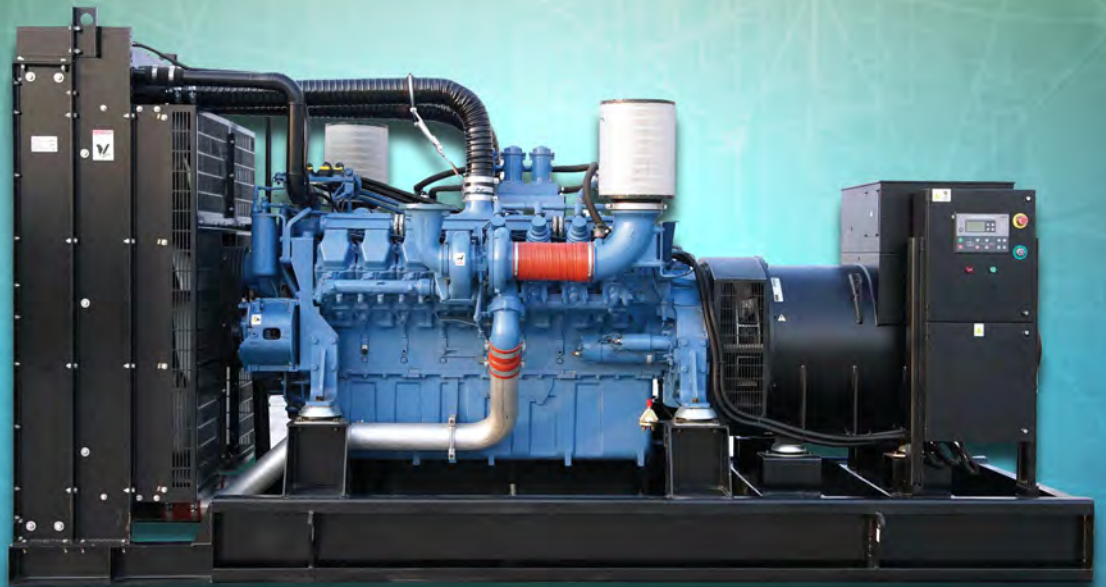
PFI Plant



HT & LT Switchgear



Automatic Circuit Recloser



Brands We Work With

Gas/Diesel Generators

30kVA-3045kVA



Description

Forest City generators, manufactured in the UK, are of the highest quality and well worth the investment in the long-run. We have been marketing Forest City generators in Bangladesh for over a decade now and have had complete success.

Forest City symbolises a company dedicated to the provision of **innovative engineering systems** based upon solid traditions of personal **service, excellence** and **quality** engineering skills. Each year witnesses further applications of the latest technology to its product **innovation, reliability** and **total flexibility**.

Brand	Type	Engine	Alternator (UK)	Capacity Range	Country of Origin (Engine)
Forest City	Diesel	PERKINS	Stamford / Mecc-Alte	30kVA-2000kVA	UK
	Diesel	VOLVO PENTA	Stamford / Mecc-Alte	180kVA-630kVA	Sweden
	Diesel	DEUTZ	Stamford / Mecc-Alte	30kVA-500kVA	Germany
	Diesel	MTU	Stamford / Mecc-Alte	650kVA-3045kVA	Germany

Powered Diesel Generators (50hz 1500rpm) 30kVA - 2000kVA

Model	Prime Power		Stamford Alternator	Engine Model	Fuel Ltrs/hr	Fuel Tank Capacity (Ltrs)	Nett Weight	Soundproofed Dimensions	Oil (Litre)
	kVA	KW	Frame Size					Length x Width x Height	
PS30	30	24	PI144G	Perkins 1103A-33G	7.1	172	800kgs	181cm x 76cm x 135cm	1100kgs
PS40	40	32	PI144J	Perkins 1103A-33TG1	9.5	172	960kgs	231cm x 78cm x 141cm	1350kgs
PS42.5	42.5	34	PI144K	Perkins 1103A-33TG1	10.1	172	960kgs	231cm x 78cm x 141cm	1350kgs
PS45	45	36.0	UCD224D	Perkins 1103A-33TG1	10.7	172	960kgs	231cm x 78cm x 141cm	1350kgs
PS60	60	48	UCD224E	Perkins 1103A-33TG2	14.0	172	960kgs	231cm x 78cm x 141cm	1350kgs
PS65	65	52	UCD224F	Perkins 1104A-44TG1	14.8	260	960kgs	277cm x 86cm x 156cm	1500kgs
PS80	80	64	UCD224G	Perkins 1104C-44TAG1	19.5	260	1080kgs	277cm x 86cm x 156cm	1545kgs
PS85	85	68	UCD224G	Perkins 1006TG1A	21.8	260	1250kgs	290cm x 95cm x 190cm	1800kgs
PS93	93	74.4	UCI274C	Perkins 1006TG1A	21.8	260	1250kgs	290cm x 95cm x 190cm	1800kgs
PS100	100	80	UCI274C	Perkins 1104C-44TAG2	24	260	1130kgs	277cm x 86cm x 156cm	1595kgs
PS103	103	82.4	UCI274D	Perkins 1006TG2A	24.3	260	1250kgs	290cm x 95cm x 190cm	1740kgs
PS138	138	110	UCI274E	Perkins 1006TAG	31.5	397	1310kgs	290cm x 95cm x 190cm	1830kgs
PS150	150	120	UCI274F	Perkins 1006TAG2	41	397	1350kgs	290cm x 95cm x 190cm	1870kgs
PS180	180	144	UCI274G	Perkins 1106C-E66TAG4	41.5	397	1590kgs	345cm x 115cm x 187cm	2150kgs
PS200	200	160	UCI274H	Perkins 1306C-E87TAG3	43.5	397	1830kgs	345cm x 115cm x 187cm	2390kgs
PS225	225	180	UCI274J	Perkins 1306C-E87TAG4	47.5	397	1920kgs	345cm x 115cm x 187cm	2480kgs
PS250	250	200	UCD274K	Perkins 1306C-E87TAG6	55.0	533	1920kgs	345cm x 115cm x 187cm	2480kgs
PS300	300	240	HC444D	Perkins 2206A-E13TAG2	61	1048	3580kgs	528cm x 165cm x 240cm	4900kgs
PS350	350	280	HC444E	Perkins 2206A-E13TAG2	71	1048	3580kgs	528cm x 165cm x 240cm	4900kgs
PS400st	400	320	HC444F	Perkins 2206A-E13TAG2	80	1048	3580kgs	528cm x 165cm x 240cm	4900kgs
PS400	400	320	HC444F	Perkins 2206A-E13TAG3	81	1048	3700kgs	528cm x 165cm x 240cm	4900kgs
PS450	450	360	HC544C	Perkins 2506C-E15TAG1	99	1133	3900kgs	438cm x 125cm x 227cm	4900kgs
PS500	500	400	HC544C/D	Perkins 2506C-E15TAG2	106	1133	3900kgs	438cm x 125cm x 227cm	4900kgs
PS600	600	480	HC544E	Perkins 2806A-E18TAG1A	123	1570	4700kgs	438cm x 165cm x 229cm	5800kgs
PS650	650	520	HC544F	Perkins 2806A-E18TAG2	125	1570	4700kgs	438cm x 165cm x 229cm	5800kgs
PS745	745	596	HCI634G	Perkins 4006C-23TAG2A	149	1770	6350kgs	810cm x 210cm x 300cm	8200kgs
PS800	800	640	HCI634G	Perkins 4006C-23TAG3A	164	1770	6350kgs	810cm x 210cm x 300cm	8200kgs
PS900st	900	720	HCI634H	Perkins 4006C-23TAG3A	164	1770	6350kgs	810cm x 210cm x 300cm	8200kgs
PS910	910	728	HCI634H	Perkins 4008TAG1A	205	Optional	7500kgs	-	-
PS1000	1000	800	HCI634J	Perkins 4008TAG2A	232	Optional	7500kgs	-	-
PS1025	1025	820	HCI634K	Perkins 4008TAG2A	232	Optional	7500kgs	-	-
PS1250	1250	1000	PI734A/B	Perkins 4012-46TWG2A	267	Optional	8900kgs	-	-
PS1360	1360	1088	PI734B	Perkins 4012-46TWG3A	285	Optional	9000kgs	-	-
PS1500	1500	1200	PI734C	Perkins 4012-46TWG2A	305	Optional	10000kgs	-	-
PS1700	1700	1360	PI734E	Perkins 4012-46TWG3A	354	Optional	10600kgs	-	-
PS1840	1840	1472	PI734E	Perkins 4016TAG1A	408	-	13200kgs	-	-
PS1845	1845	1476	PI734E	Perkins 4016-61TRG1A	-	-	-	-	-
PS1860	1860	1488	PI734E	Perkins 4016-61TRG1A	-	-	-	-	-
PS2000	2000	1600	PI734F	Perkins 4016TAG2A	437	-	13200kgs	-	-
PS2135	2135	1708	-	Perkins 4016-61TRG3A	-	-	-	-	-
PS2200	2200	1760	-	Perkins 4016-61TRG3A	-	-	-	-	-
PS2250	2250	1800	-	Perkins 4016-61TRG3A	-	-	-	-	-

For specifications of VOLVO PENTA, DUETZ and MTU engine powered generators and for additional information on Forest City, Tempest, Chinese manufactured generators and GAS generators please contact our office.

Warranty: We provide warranty against any materials and workmanship defect for a period of 18 months from date of delivery. We will repair/replace the defective parts within shortest possible time at our cost. After expiry of the warranty period, repair/maintenance of the equipment may be carried out for a nominal fee.

Switchgear HT/LT/PFI



Distribution Transformers



Gas/Diesel Generator



Solar



PFI Plant



HT & LT Switchgear



Automatic Circuit Recloser



Brands We Work With

Switchgear

Frequency 50hz - IEC standards



Description

Various **Switchgear Panels** are fabricated in our factory as per customer's requirements. The table below lists the technical specifications for the HT, LT and PFI switchgear. The panels which house the various components are sheet steel clad, dust and vermin proof.

Switchgear components (such as VCB, ACB, MCCB, Relay, CT, PT, Capacitor, Fuse etc.) offered are sourced from well-known and highly-reliable brands such as **ABB, SIEMENS, LS** and others as listed below. Bus-bars and conductors housed in panels are usually of **Copper**. All panels are provided with an **Earthing Terminal**. As both a

Safety and security feature, all panel doors come with a **Locking System**.

The High and Low voltage side of **HT Switchgear** are separated to avoid accidents during operation. All **controls, indicating and measuring devices**, are located on the front of the upper low-voltage compartment of the switchgear and PFI panels. **PFI panels** are manufactured for both manual and auto operation.

Panels receive standard anti-corrosion surface treatment and **Powder Coating**, final color **Power Flow Engineering Medium-Grey**.

Specifications

	Components	Rated Voltage (KV)	Rated Current In Busbar (A)	Power Frequency Withstand Voltage (KV/min.)	Rated Frequency (Hz)	Standard
HT Switchgear (630A-1250A)	LBS from 315 kVA upto 630 kVA Substation	12	630 / 800 / 1250	28		
	VCB above 630 kVA Substation					
LT Switchgear (25A-6300A)	TP ACB TP MCCB TP MCB SP MCB	0.415	1000 / 1500 / 2000	3	50	IEC
PFI Plant (10kVAR-3400kVAR)	Capacitor PFC Relay Magnetic Contactor	0.415	500 / 1000 / 2000	3		

HT Switchgear

- ☒ LBS
 - » F&G Germany
- ☒ VCB
 - » SIEMENS
 - » ABB
 - » Betelco
- ☒ CT/PT
 - » SIEMENS
 - » Other Brands
- ☒ IDMT Relay
 - » SIEMENS
 - » ENTESS
 - » Other Brands

LT Switchgear

- » ABB
- » LS
- » Dorman Smith
- » Merlin Gerin
- » Telemecanique
- » Other Brands

PFI Plant

- ☒ Capacitor
 - » Frako
 - » Epcos
 - » Aener Energia
 - » Havells
 - » Enerlux
 - » Ducati
- ☒ Magnetic Contactor
 - » Togami
 - » LS
 - » Dunga
- ☒ PFC Relay
 - » Frako
 - » Epcos
 - » Shizuki
 - » Beluk
 - » PR Tec.
 - » Mikro
 - » Other Brands

Warranty: We provide manufacturer's warranty of 12 months, from the date of delivery, on all switchgear components.

Solar Power System



Distribution Transformers



Gas/Diesel Generator



CCTV Camera



PFI Plant



HT & LT Switchgear



Automatic Circuit Recloser



We Provide:

- ✘ Solar Power Plant EPC Services
- ✘ Solar Power Pack (Commercial & Industrial)
- ✘ Solar Power System for Telecom/Railway Application
- ✘ Solar Power Plant (1 MW to 5 MW)
- ✘ Industrial Captive Solar Power Plant
- ✘ Solar Water Pump (up to 20 HP)
- ✘ Solar Power Backup System
- ✘ Solar LED Street Light (6 W to 100 W)
- ✘ Solar Garden Light
- ✘ Solar Decorative LED Base System (Hotel, Multiplex, Hospital etc...)

Brands We Work With

We Also Provide



High Voltage Lightning Arrester



High Voltage Protection Gloves



HT Cable



Heat Shrink Kit



HRC Fuse



Automatic Transfer Switch



11 & 33 KV CT / PT



Circuit Breaker



Capacitor Bank



Isolator



Drop-out Fuse



LBS



Bus-Bar



Cable Lugs



Metering Cable



Tube



Copper Wire



Fire Extinguisher



Building Lightning Arrester



Star Delta Motor Starter



Brands We Work With
